

COMMISSION ON TEACHER CREDENTIALING

1812 Ninth Street
Sacramento, California 95814-7000
(916) 445-0184
FAX (916) 327-3166




OFFICE OF THE EXECUTIVE SECRETARY

92-9218

Date: August 25, 1992

To: All Individuals and Organizations Interested in the
Activities of the Commission on Teacher Credentialing

From: 
Philip A. Fitch, Executive Secretary

Subject: New Assessments to Verify Subject Matter Competence
for the Multiple Subjects Credential and in
Five Additional Single Subjects

Commission Adoption of New Examination Requirements for the Multiple Subject Teaching Credential

On June 5, 1992, the Commission adopted the Multiple Subjects Assessment for Teachers (MSAT) for evaluating the subject matter competence of applicants for the Multiple Subject Teaching Credential. Beginning with the October 1992 administration of the National Teachers Examination (NTE), these applicants must pass the MSAT. The MSAT replaces the General Knowledge Test of the NTE Core Battery.

Like the General Knowledge Test, which is two hours long and consists of only multiple-choice questions, the MSAT has a two-hour multiple-choice section on content knowledge; however, it also has two sections of content area exercises in which candidates must construct their own answers to questions. Content Area Exercises 1 and 2 are two hours and one hour, respectively. *In total, the MSAT is a five hour exam.* A descriptive booklet of the MSAT is included with this memorandum.

The new MSAT was developed by Educational Testing Service (ETS) under the terms of a contract with the Commission and with the advice of the Commission's Elementary Subject Matter Assessment Advisory Panel. This panel consisted of California teachers, professors, and curriculum specialists. The panel developed extensive specifications for the MSAT which were adopted by the Commission in 1991. These specifications were distributed for field review in the Spring of 1991. ETS conducted pilot studies and field tests of the new MSAT, and the Advisory Panel considered the results of the field review, pilot studies, and field tests before completing its work on the MSAT.

Procedures for MSAT Registration and Credential Application

Individuals must register separately for the Multiple Choice Content Knowledge section and the Content Area Exercises 1 and 2 sections of the MSAT. For administrative purposes, the Content Area Exercises 1 and 2 are listed separately in the bulletin. *However, candidates must take both Content Area Exercises 1 and 2 of the MSAT on the same day in order to receive a score. The two exercises will be reported as a single score.* It is not necessary to take the Content Knowledge Section and Content Area Exercises 1 and 2 on the same day. To take the MSAT outside of California, the candidate must request a supplementary test center. See page 18 of the 1992-93 NTE Programs Bulletin of Information for more information.

When applying for a credential based on passing scores in these three sections (Content Knowledge and Content Area Exercises 1 and 2) of the MSAT, the candidate must submit to the Commission the official examination score reports for all sections and one thirty-dollar (\$30) test development and administration fee (formerly called a "filing fee").

MSAT Passing Standards

Enclosed with this letter you will find a chart with the current passing scores for the MSAT. These scores were adopted by the Commission on August 21, 1992, and are operative for the October 1992 administration *only*. The Commission, at its January 1993, meeting will reconsider these passing scores after it has examined the results of the first administration of the MSAT.

If candidates pass the MSAT, or any section of the MSAT, in October 1992, based on the listed passing score, any changes in passing standards will not affect their status on the sections they have passed. However, failing scores based on the current standards may become passing scores if the Commission changes the passing standards at its January 1993 meeting. All examinees failing the MSAT based on the current passing scores will be sent a letter on or about January 13, 1993, notifying them of the Commission's decisions.

Commission Adoption of New Examination Requirements for Selected Single Subject Credentials

On May 8, 1992, the Commission adopted five new Content Area Performance Assessments (CAPA) for evaluating the subject matter competence of applicants for Single Subject Teaching Credentials in Art, Foreign Language: French, Foreign Language: Spanish, Music, and Physical Education. These assessments will be administered by Education Testing Services in conjunction with the NTE Specialty Area Examinations. Beginning with the November 1992 administration of the NTE, applicants for credentials in any of these five areas must pass the NTE Specialty Area Examination, which was required previously, plus the new Content Area Performance Assessment (CAPA) in the appropriate subject.

Unlike the Specialty Area Examination which consists of multiple-choice questions, the Content Area Performance Assessment consists of longer questions, exercises, and problems, that require candidates to write extended

responses or, in the case of foreign language, to respond verbally. Each question, exercise, or problem in the CAPAs are designed to measure the candidate's ability to *perform* competently in the discipline. In each discipline, the CAPA complements the NTE Specialty Area Examination, which measures knowledge of basic information in the subject. The Commission's 1987 study of the validity of the NTE Exams showed, among other conclusions, that subject matter assessments should include a content-based *performance* assessment, which is why the Commission planned, designed, and adopted the CAPAs.

The new CAPAs were developed by Educational Testing Service under the terms of a contract with the Commission, and with the advice of the Commission's Teacher Preparation and Assessment Advisory Panels in Art, Foreign Languages: French and Spanish, Music, and Physical Education. The panels consisted of California teachers, professors, and curriculum specialists in the five subjects. The panels developed extensive specifications for the CAPAs. These specifications were distributed for field review in the Spring of 1992. ETS conducted pilot studies and field tests of the new CAPAs, and the Advisory Panel considered the results of the field review, pilot and field study before completing their work on the CAPAs.

Procedures for NTE Specialty Area Test and CAPA Registration and Credential Application

Individuals must register separately for the NTE Specialty Area Examination and the CAPA. It is not necessary to take the two tests on the same day. To take the CAPA outside of California, the candidate must request a supplementary test center. See page 18 of the 1992-93 NTE Programs Bulletin of Information for more information.

When applying for a credential based on passing scores in these two examinations (Specialty Area and CAPA), the candidate must submit to the Commission the official examination score reports for both examinations and one thirty-dollar (\$30) test development and administration fee (formerly called a "filing fee"). If the applicant is applying for two or more subject areas on the basis of passing NTE scores, there is a \$30 test development and administration fee for each subject area.

The CAPAs in the areas of Art, French, Spanish, Music, and Physical Education were field tested at California NTE test administration sites in September 1991, March 1992, and July 1992. Any individual who participated in one of these field tests and failed to pass the NTE Specialty Area Examination needs to retake only the Specialty Area Exam and does not need to retake the CAPA. Participation in the CAPA field study waives the requirement to submit a passing score. *An applicant who falls into this category must submit the original examination score report showing the failing score with his or her credential application to verify that the examination was taken in California on one of the field study test dates.*

CAPA Passing Standards

Enclosed with this letter you will find charts with the current passing scores for the new CAPAs. These scores were adopted by the Commission on August

21, 1992, and are operative for the November 1992 and the March 1993 administrations. The Commission at its June meeting will examine the impact of the current passing scores and may reconsider the passing scores.

If candidates pass the CAPA, or any module of the CAPA, based on the current passing score, any changes in passing standards will not affect their status on the sections they have passed. However, failing scores based on the current standards may become passing scores if the Commission changes the passing standards at its June 1993 meeting. All examinees failing the CAPA based on the current passing scores will be sent a letter on or about June 12, 1993, notifying them of the Commission's decisions.

Other Single Subject Areas

As of November 1991, individuals who want to verify subject-matter competence by examination in English, Life Science, Mathematics, Physical Science, or Social Science have been required to pass both the NTE Specialty Area Test and the Content Area Performance Assessment (CAPA) in the appropriate subject. Enclosed is information regarding passing scores for these tests.

Individuals who want to verify subject-matter competence by examination in Agriculture, Business, Foreign Language: German, Home Economics, and Industrial & Technology Education will continue to take *only* the NTE Specialty Area Test in their subject. There are no approved examinations for the subjects of Government, Health Science, or History or for any foreign language except Spanish, German, and French.

A Final Note

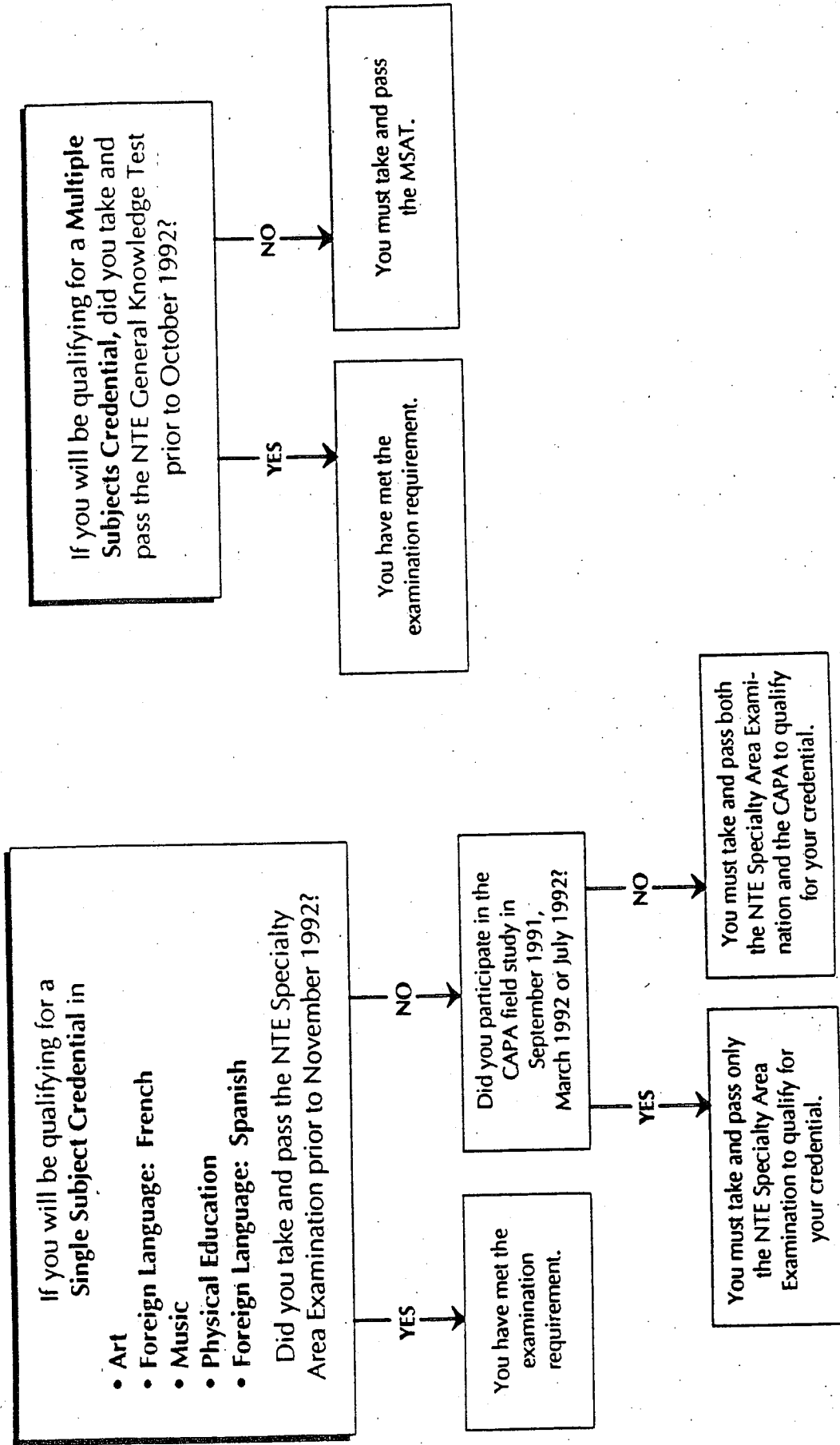
Neither the five new CAPAs nor the MSAT affect teachers who took and passed the appropriate NTE prior to October 1992, as long as the test scores are used to verify subject matter competence for the credential within five years of the test date. Neither do the new requirements affect candidates who are completing Commission-approved subject matter preparation programs at California colleges or universities. Teachers who want to add a subject to an existing credential by examination must meet the new requirements beginning October 1992.

The following page provides a chart that summarizes the information explained above and may be of help to applicants to determine which examinations they need to take. Please feel free to duplicate it or any other of the enclosed materials.

If you have questions, you may call our Information Services Office between 12:30 and 4:30 any week-day afternoon at (916) 445-7254 and select the menu choice that provides information about examinations.

EXAMINATION REQUIREMENTS FOR CANDIDATES APPLYING FOR MULTIPLE OR SELECTED* SINGLE SUBJECT TEACHING CREDENTIALS

Since you have chosen to qualify for a Multiple or Selected* Single Subject Teaching Credential on the basis of passing the National Teachers Examination (NTE), the following chart should help you to determine which examinations you will need to take and pass.



* In the subjects of Art, Music, Physical Education, Foreign Language: French, or Foreign Language: Spanish.

MSAT Information

Elements of the MSAT	Number of Questions	Item Grade Range	Question Type	Maximum Possible Scale Score	Passing Scale Score	Minimum Allowable Scale Score
Section A	150	0-1	Multiple Choice (Test #14)	200	162	154
Section B	22	0-3	Short Constructed Response (Tests #15 & #16)	200	152	143
Total MSAT				400	314	

The following chart displays all of the passing standards for Sections A and B and the total MSAT exam, for raw scores as well as scaled scores, and for passing scores as well as minimum allowable scores.

<u>MSAT: Proposed Interim Passing Standards</u>		Score Type:	
		Raw	Scaled
Section A:	Total Possible Score (Multiple Choice)	150	200
Section A:	Recommended Passing Score	100	162
Section A:	Minimum Allowable Score*	90	154
Section B:	Total Possible Score (Short Response)	66	200
Section B:	Recommended Passing Score	33	152
Section B:	Minimum Allowable Score*	28	143
MSAT:	Total Possible Score (Overall)		400
MSAT:	Recommended Passing Score (Overall)		314

* Minimum scores are accepted when the overall MSAT passing score (314) has been achieved.

Art CAPA: Interim Passing Scores

Total possible score on the two modules:	56
Passing score for both modules combined:	33
Passing score on Module 1:	17
Passing score on Module 2:	16
Minimum score on Module 1*	14
Minimum score on Module 2*	13

* Minimum scores are accepted with a total score of 33.

The structure of the Art CAPA is displayed below, along with information about the passing scores.

Elements of the Art CAPA	Number of Questions	Item Grade Range	Item Score Range	Weight Each Element	Maximum Scores for Elements	Passing Scores	Minimum Allowable Scores
Module 1	3	0-5	0-10	1	30	17	14
Module 2							
Section A	2	0-5	0-10	1	20		
Section B	2	0-3	0-6	.5	6		
Mod 2 Total	4				26	16	13
CAPA Total	7				56	33	33

The score range is calculated by multiplying the grade range by the number of raters, which is two. The maximum score for a module (or for a section of a module) is calculated by multiplying the number of questions by the score range by the weight. The passing standard requires examinees to earn a total CAPA score of at least 33 when the total possible score is 56.

**French and Spanish CAPAs:
Interim Passing Scores**

Total possible score on Module 1:	30
Total possible score on Module 2:	26
Passing score on Module 1:	20
Passing score on Module 2:	16

Structural elements of the French and Spanish CAPAs are highlighted below, with added information about the passing scores.

Elements of Each CAPA	Number of Questions	Number of Raters	Item Grade Range	Item Score Range	Weight for Each Element	Maximum Scores on Elements	Passing Scores
Module 1							
Speaking	9	2	0-4	0-8	.5	36	
Writing	3	2	0-4	0-8	1	24	
Mod. Total	12				.5	30	20
Module 2							
Error Anlys	1	2		0-10	1	10	
Literature	1	2	0-4	0-8	1	8	
Culture	1	2	0-4	0-8	1	8	
Mod. Total	3				1	26	16

The score for each element is calculated by multiplying the grade range by the number of raters (2). The maximum score for a module, or for a section of a module, is calculated by multiplying the number of questions by the score range by the weight. The Module 1 score is derived by adding the scores for the speaking and writing sections and dividing by 2. Examinees are required to pass Module 1 (score of 20 or higher) and Module 2 score of 16 or higher). Candidates are not required to pass both modules at the same administration.

Music CAPA: Interim Passing Score

Total possible score on the CAPA:	40
Passing score on the CAPA:	24
(Modules 1 and 2 combined)	

The structure of the Music CAPA is highlighted below, with information about the passing scores.

Elements of Music CAPA	Number of Questions	Number of Raters	Item Grade Range	Item Score Range	Weight for Each Element	Maximum Possible Scores	Passing Scores
Module 1	2	2	0-5	0-10	1	20	
Module 2							
Section A	2	2	0-5	0-10	.5	10	
Section B	1	2		0-10	1	10	
Total CAPA	5				1	40	24

For each element the score range is calculated by multiplying the grade range by the number of raters. The maximum score for a module, or for a section of a module, is calculated by multiplying the number of questions by the score range by the weight.

**Physical Education CAPA:
Interim Passing Scores**

Total possible score on the two modules:	48
Passing score for both modules combined:	30
Passing score on Module 1:	15
Passing score on Module 2:	15
Minimum score on Module 1*	14
Minimum score on Module 2*	14

* Minimum scores are accepted with a total score of 30.

The structure of the PE CAPA is highlighted below, with information about the passing scores.

Elements of P.E. CAPA	Number of Questions	Item Grade Range	Item Score Range	Weight of Each Element	Maximum Possible Scores	Passing Scores	Minimum Allowable Score
Module 1	2	0-6	0-12	1	24	15	14
Module 2	2	0-6	0-12	1	24	15	14
Total CAPA	4				48	30	

The score range for each module is calculated by multiplying the grade range by two (the number of raters). The maximum score for each module is calculated by multiplying the number of questions by the score range by the weight. The recommended passing standard requires examinees to earn a total CAPA score of at least 30 when the total possible score is 48 (both modules combined).